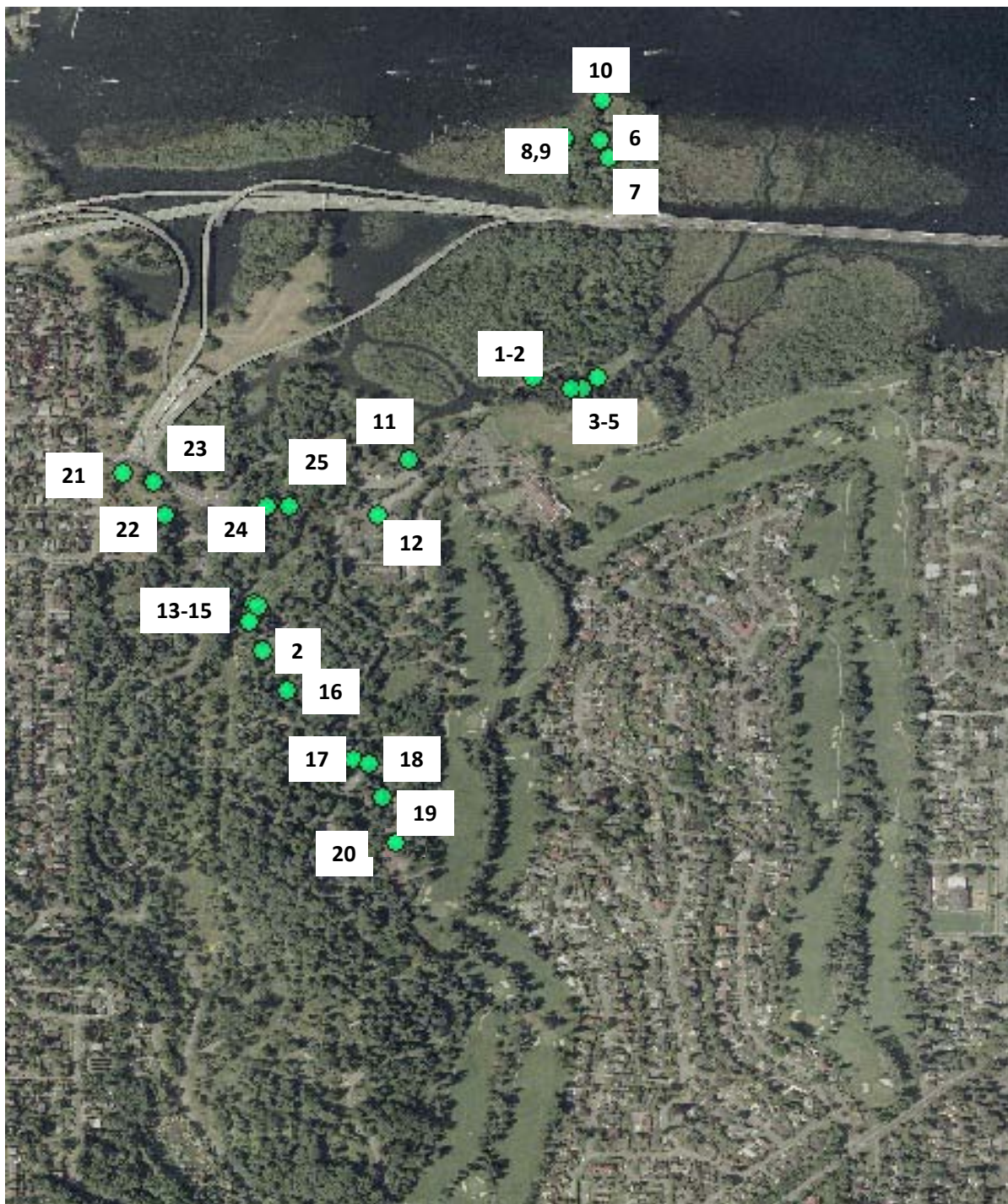


# Washington Park Arboretum Bioblitz, 2010 Fungi



Fungi species #	Species name	Questionable?	Date	Latitude	Longitude	Quantity	Habitat
1	Agrocybe spp.		5/22/2010	47.642333	-122.29158	40	236
2	Parasola plicatilis gp.		5/22/2010	47.637985	-122.295855	3	236
2	Parasola plicatilis gp.		5/22/2010	47.642325	-122.291553	1	236
3	Trametes versicolor		5/22/2010	47.64216	-122.290793	100	236
4	Calocera viscosa		5/22/2010	47.642145	-122.290975	15	236
5	Coprinellus micaceus		5/22/2010	47.6423083	-122.290552	45	236
6	Lycogala epidendrum		5/22/2010	47.64609	-122.290523	100	236
7	Scutellinia scutellata		5/22/2010	47.6458267	-122.290372	100	236
8	Stropharia ambigua		5/22/2010	47.646055	-122.291068	3	236
9	Agrocybe praecox		5/22/2010	47.6461167	-122.29107	12	236
10	Amanita novanupta		5/22/2010	47.6467133	-122.290492	5	236
11	Panaeolus foenicicii		5/22/2010	47.64101	-122.293543	5	236
12	Macrocystidia cucumis		5/22/2010	47.6401317	-122.294035	8	236
13	Ganoderma applanatum		5/22/2010	47.63872	-122.295995	2	236
14	Stereum sp. 14a.Tichaptum abietinum		5/22/2010	47.6386967	-122.295937	2	236
15	Dacrymyces spp.		5/22/2010	47.63847	-122.296062	12	236
16	Coprinellus lagopus		5/22/2010	47.6373667	-122.295477	3	236
17	Leratiomyces cereus		5/22/2010	47.63628	-122.294422	50	236
18	Chlorophyllum olivieri	I'm certain; it's unusual	5/22/2010	47.636206	-122.294163	25	236
19	Radiigera fuscogleba	I'm certain; it's unusual	5/22/2010	47.635673	-122.293973	1	236
20	Agrocybe praecox		5/22/2010	47.6210033	-122.283595	24	236
21	Stropharia ambigua	I'm uncertain	5/22/2010	47.640811	-122.298083	3	236
22	Bolbitius vitrellinus		5/22/2010	47.64014	-122.297423	1	236
23	Chlorophyllum sp.		5/22/2010	47.640663	-122.287581	10	236
24	Chlorophyllum sp.		5/22/2010	47.6402986	-122.295789	1	236
25	Pholiota terrestris		5/22/2010	47.6403017	-122.295441	15	236