

Pierce County Biodiversity Network Lower White River 2007 Bioblitz at Selected Sites - Auburn

A Work in Progress of the
Pierce County Biodiversity Alliance (PCBA)

(Pierce County Planning and Land Services, University of Washington,
Washington Department of Fish and Wildlife, MetroParks Tacoma, Puyallup
River Watershed Council)



What is Biodiversity Planning?

Biodiversity planning is a method used to identify land areas that provide for a biologically diverse representation of species. This planning method considers long-term ecosystem health and establishes a goal of maintaining adequate habitat to ensure the continued viability of a diversity of species within an ecoregion.

Lower White River BioBlitz

June 3-4, 2006 and April 21, 2007

What is a BioBlitz? A rapid biological inventory of the plant and animal diversity found in a designated area during a 24-hour time frame.



Purpose

To continue the implementation of conservation planning for the Biodiversity Network with landowners and experts to build enthusiasm around biodiversity preservation through open discussion and exploration with experts. In doing so, discover why biodiversity preservation is meaningful to the community (including economically and socially), and to verify species lists for long-term monitoring.

Who was involved?

2006: Over 100 experts from natural resource agencies, universities, museums, Tahoma and Seattle Audubon, individuals with expertise on specific taxa, such as beetles, bats etc., volunteers, and landowners participated. The bioblitz was funded by a grant from the Washington Biodiversity Council.

2007: Twenty-five experts and volunteers spent 12 hours blitzing 3 sites: Auburn Wilderness Park, City of Pacific Park, and Pierce/King County Water Resources property. The bioblitz was funded by a grant from the Environmental Protection Agency.

The Results

	June 2006	Earth Day April 2007
Volunteers	100	37
Cost	\$17,300	\$2,129 (not including mileage)
Area Sampled	1,593 acres	50 acres
Length of bioblitz	24 hours	12 hours
Taxa Teams		
Birds	3 teams	1 team
Amphibians/Reptiles	3 teams	
Mammals	3 teams	1 team
Trackers - Mammals		3 teams
Plants	3 teams	2 teams
Invertebrates		
Aquatic	1 team	
Mollusks	2 teams	
Butterflies/Moths	2 teams	
Beetles	2 teams	1 team
Spiders	1 team	



2006 & 2007 Bioblitz Comparison

	2006	2007
Birds	81	40
Mammals	25	17
Amphibians	7	0
Reptiles	3	2
Fish	5	0
Invertebrates	207	12
Plants	230	196
Note: 2006 totals were adjusted after the final report was issued.		

Auburn Game Farm and Wilderness Park

	2006	2007
Birds	18	29
Mammals	2	5
Amphibians	1	0
Reptiles	0	2
Fish	0	0
Invertebrates	0	12
Plants	74	139
Non-native	31	61
Trees	11	16
Shrubs	15	24
Grass/forbs	48	99

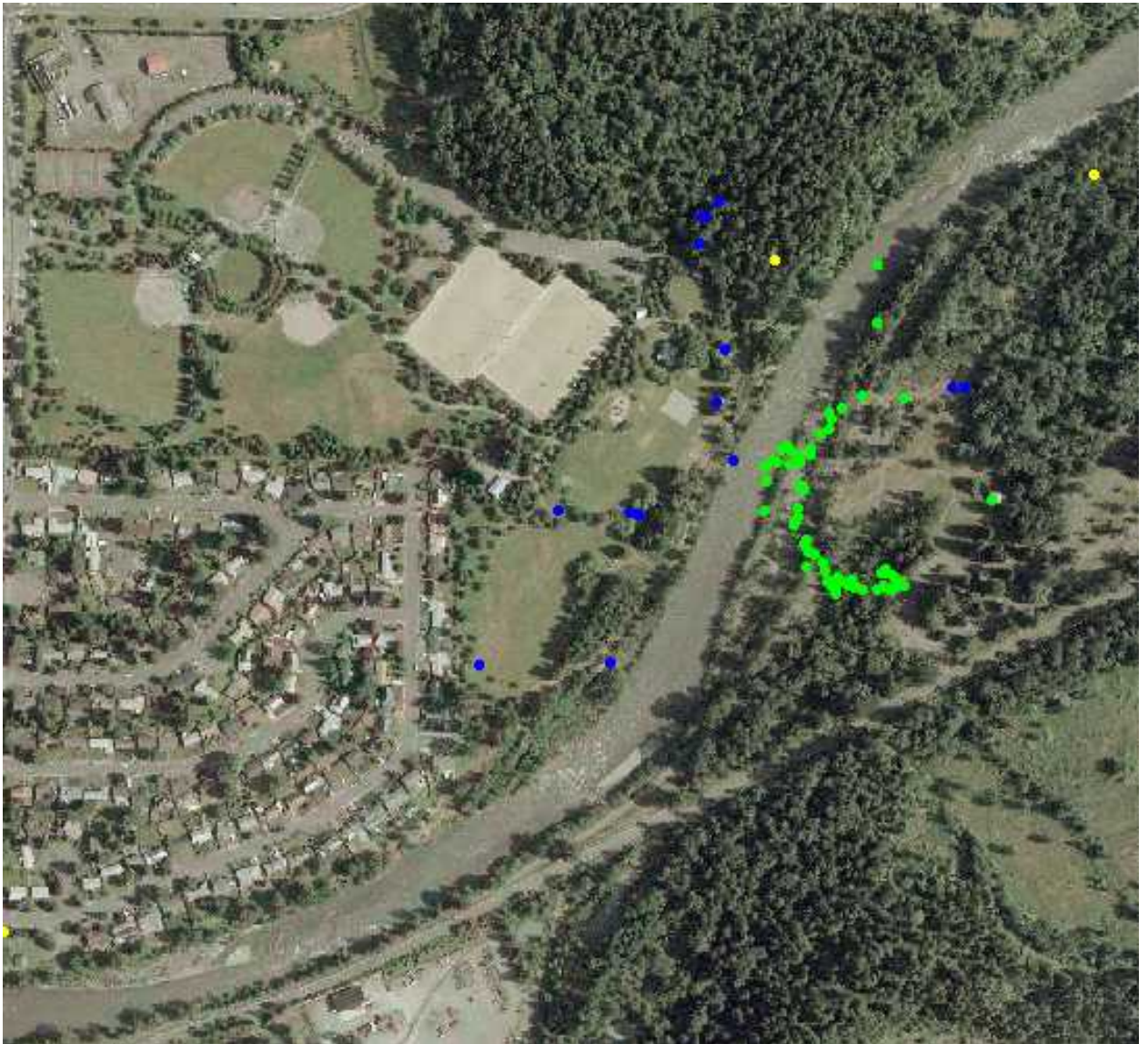
Auburn Game Farm and Vicinity, 2006

Bioblitz data were reported at the locations marked below:

Mammals – yellow

Birds – blue

Plants - green



Auburn Wilderness Park and Vicinity, 2007

Bioblitz data were reported at the locations marked below:

Mammals – yellow...Mammal Trackers – light blue

Birds – blue

Plants – green

Invertebrates - red

