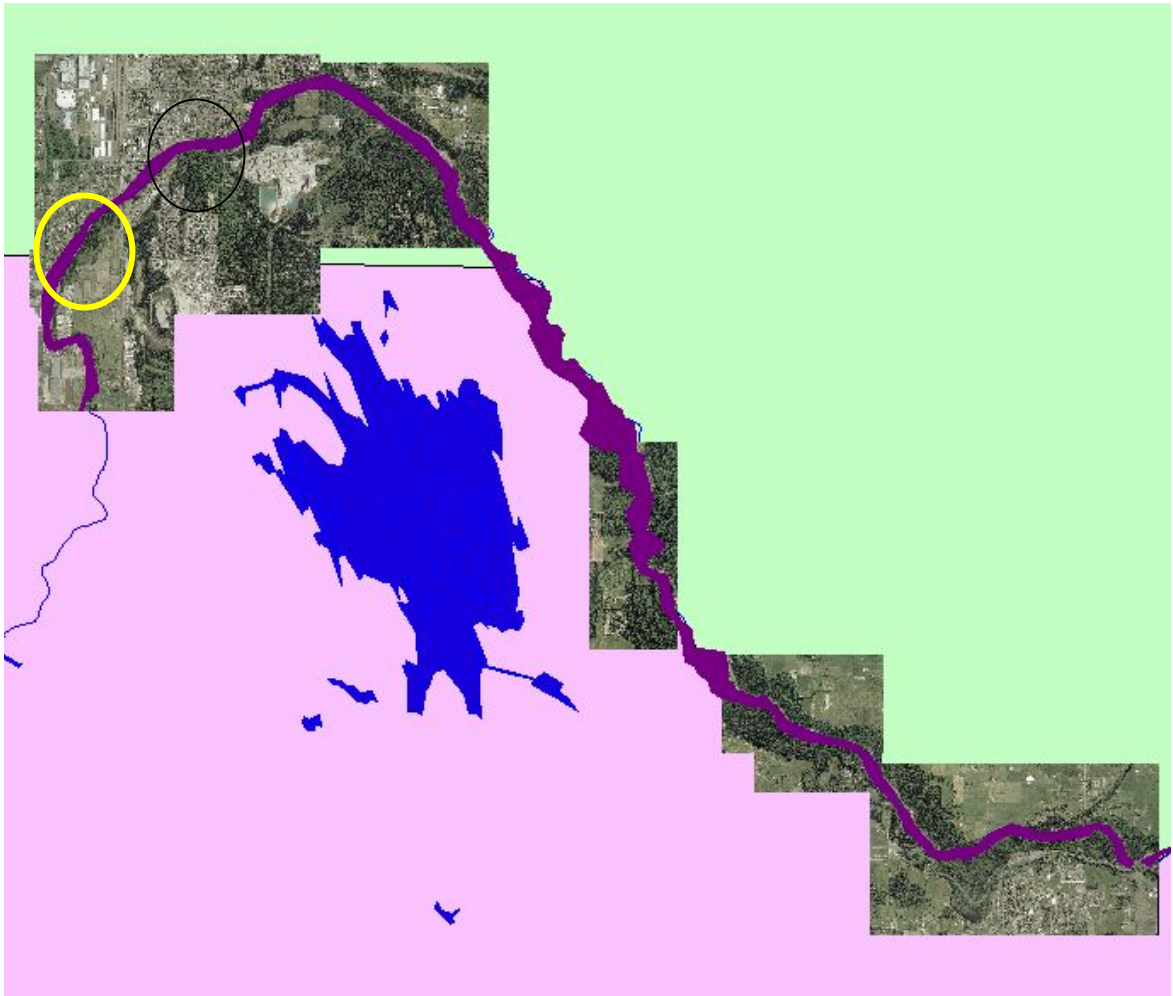


# Pierce County Biodiversity Network Lower White River 2007 Bioblitz at Selected Sites - Pacific

A Work in Progress of the  
*Pierce County Biodiversity Alliance (PCBA)*

(Pierce County Planning and Land Services, University of Washington,  
Washington Department of Fish and Wildlife, MetroParks Tacoma, Puyallup  
River Watershed Council)



## What is Biodiversity Planning?

Biodiversity planning is a method used to identify land areas that provide for a biologically diverse representation of species. This planning method considers long-term ecosystem health and establishes a goal of maintaining adequate habitat to ensure the continued viability of a diversity of species within an ecoregion.

# Lower White River BioBlitz

## June 3-4, 2006 and April 21, 2007

What is a BioBlitz? A rapid biological inventory of the plant and animal diversity found in a designated area during a 24-hour time frame.



### Purpose

- To continue the implementation of conservation planning for the Biodiversity Network with landowners and experts to build enthusiasm around biodiversity preservation through open discussion and exploration with experts.
- To assess the quality of habitat and confirm species predicted within the Lower White River BMA.

### Who was involved?

2006: Over 100 experts from natural resource agencies, universities, museums, Tahoma and Seattle Audubon, individuals with expertise on specific taxa, such as beetles, bats etc., volunteers, and landowners participated. The bioblitz was funded by a grant from the Washington Biodiversity Council.

2007: Twenty-five experts and volunteers spent 12 hours blitzing 3 sites: Auburn Wilderness Park, City of Pacific Park, and Pierce/King County Water Resources property. The bioblitz was funded by a grant from the Environmental Protection Agency.

## The Results

	June 2006	Earth Day April 2007
Volunteers	100	40
Cost	\$17,300	\$2,129 (not including mileage)
Area Sampled	1,593 acres	50 acres
Length of bioblitz	24 hours	12 hours
Taxa Teams		
Birds	3 teams	1 team
Amphibians/Reptiles	3 teams	
Mammals	3 teams	1 team
Trackers - Mammals		3 teams
Plants	3 teams	2 teams
Invertebrates		
Aquatic	1 team	
Mollusks	2 teams	
Butterflies/Moths	2 teams	
Beetles	2 teams	1 team
Spiders	1 team	



## 2006 & 2007 Bioblitz Comparison

	<b>2006</b>	<b>2007</b>
Birds	81	40
Mammals	25	17
Amphibians	7	0
Reptiles	3	2
Fish	5	0
Invertebrates	207	12
Plants Note: 2006 totals were adjusted after the final report was issued.	230	196

## City of Pacific City Park King & Pierce County Properties

	<b>2006</b>	<b>2007</b>
Birds	46	27
Mammals	19	14
Amphibians	0	0
Reptiles	0	2
Fish	0	0
Invertebrates	0	0
Plants	75	142
Non-native	36	61
Trees	13	21
Shrubs	9	26
Grass/forbs	53	95

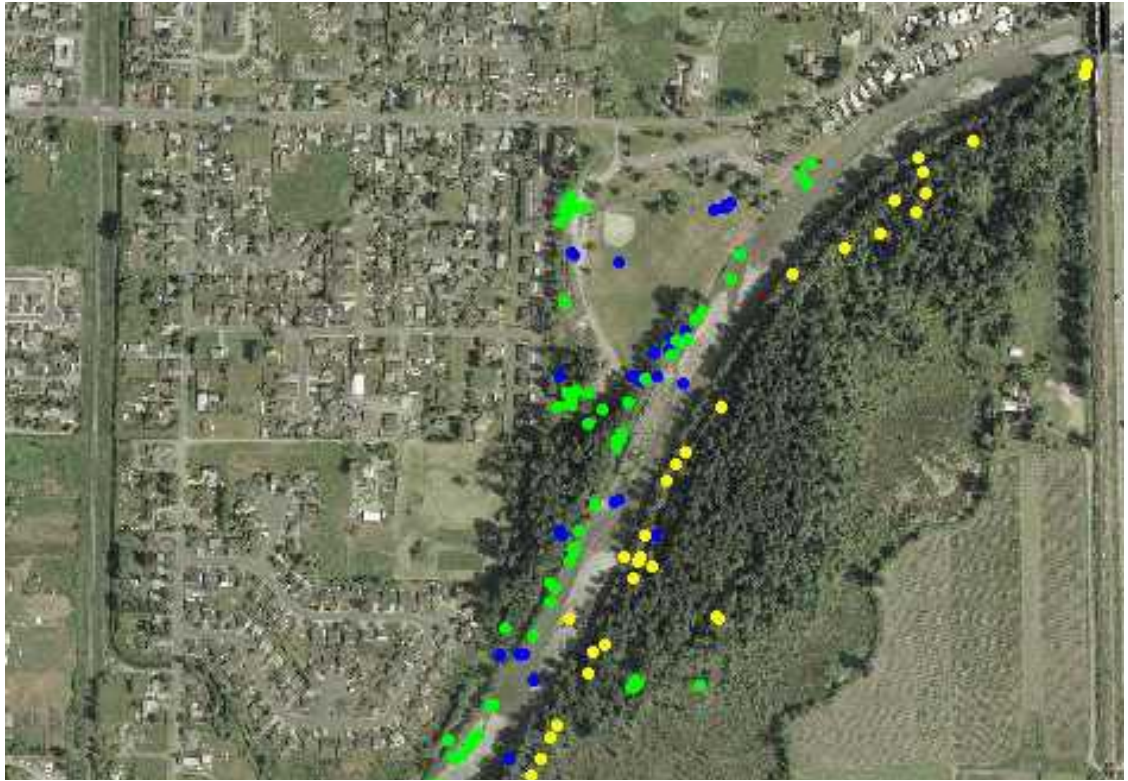
## City of Pacific and Vicinity 2006

Bioblitz data were reported at the locations marked below:

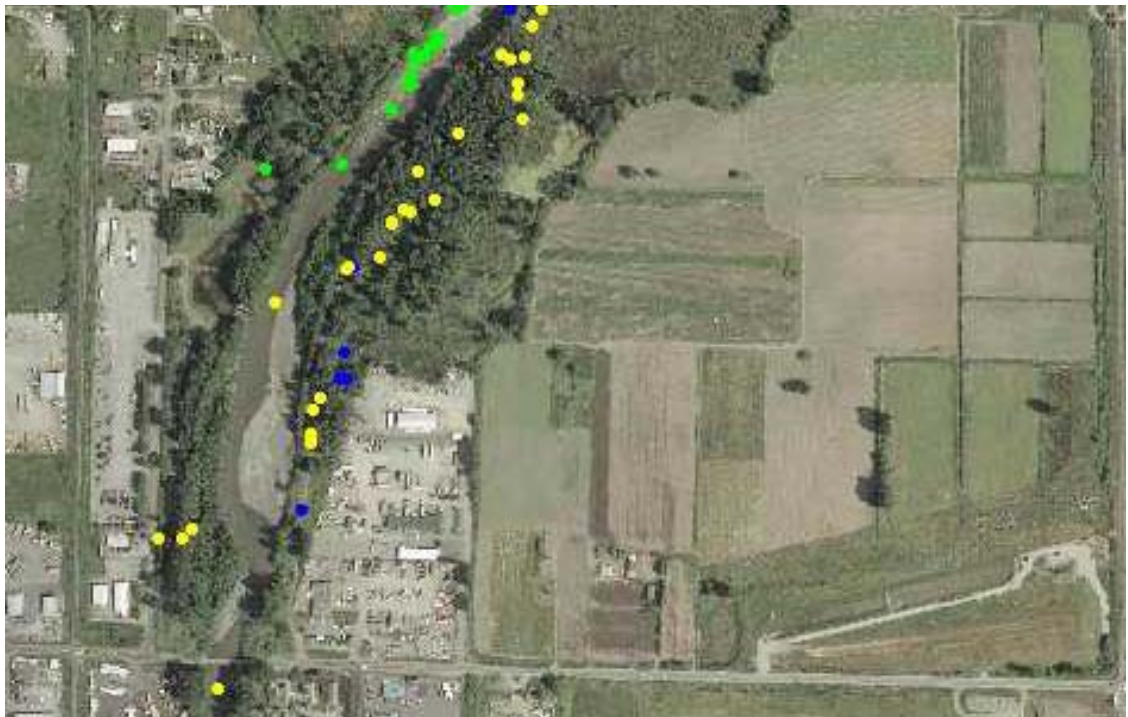
Mammals – yellow

Birds – blue

Plants - green



## Pierce County Water Programs 2006



# City of Pacific and Vicinity 2007

Bioblitz data were reported at the locations marked below:

Mammals – yellow ... Mammal Trackers – light blue

Birds – blue

Plants - green

